

Clock Tower Place: ±20,428 SF Office/Retail

1680 SW Saint Lucie West Blvd, Port St. Lucie, FL 34986

**NAI** Southcoast



*Presented by*

Stuart Duffin, P.A, SIOR, CCIM

Principal | Broker Associate

+1 772 579 0370

[sduffin@naisouthcoast.com](mailto:sduffin@naisouthcoast.com)

[www.naisouthcoast.com](http://www.naisouthcoast.com)

JJ Sanguiy

Sales Associate

+1 772 834 3519

[jj@naisouthcoast.com](mailto:jj@naisouthcoast.com)

[www.naisouthcoast.com](http://www.naisouthcoast.com)

FOR LEASE:

Call for Pricing

# Clock Tower Place: ±20,428 SF Office/Retail

1680 SW Saint Lucie West Blvd, Port St. Lucie, FL 34986

## Property Details

Property Address:	1680 SW Saint Lucie West Blvd. Port Saint Lucie, FL 34986
Building Size:	20,428 SF
Zoning:	CG - General Commercial
CAM:	Approximately \$11.76 SF/YR CAM
Lease Term:	Negotiable



## Property Overview

- Prominent landmark property in St. Lucie West
- Home to several well known tenants including West End Grill, Vine & Barley, Cigar Store
- Well maintained building with lush landscaping



# Clock Tower Place: ±20,428 SF Office/Retail

1680 SW Saint Lucie West Blvd, Port St. Lucie, FL 34986



# Clock Tower Place: ±20,428 SF Office/Retail

1680 SW Saint Lucie West Blvd, Port St. Lucie, FL 34986



# Clock Tower Place: ±20,428 SF Office/Retail

1680 SW Saint Lucie West Blvd, Port St. Lucie, FL 34986



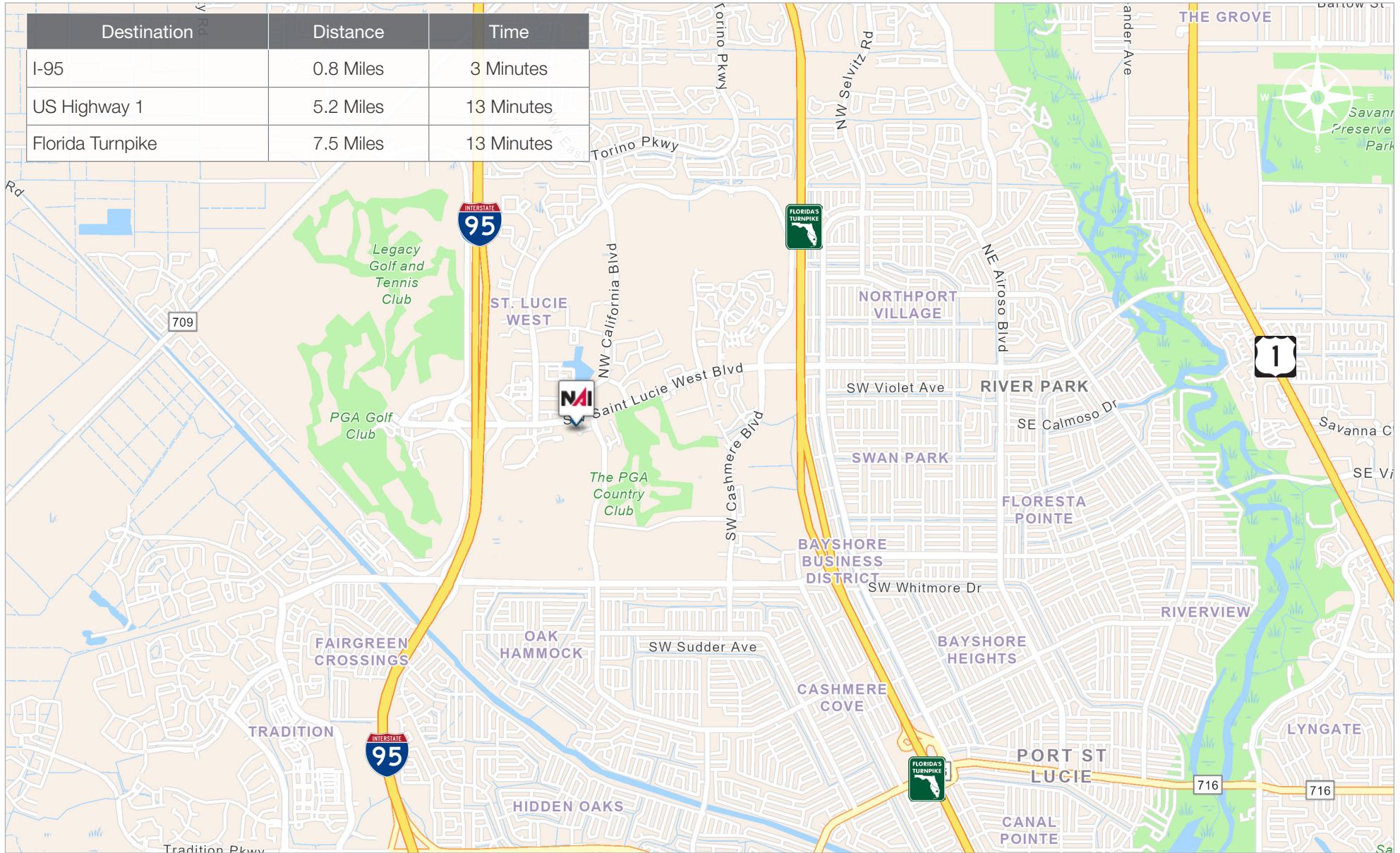
ST LUCIE WEST BLVD



# Clock Tower Place: ±20,428 SF Office/Retail

1680 SW Saint Lucie West Blvd, Port St. Lucie, FL 34986

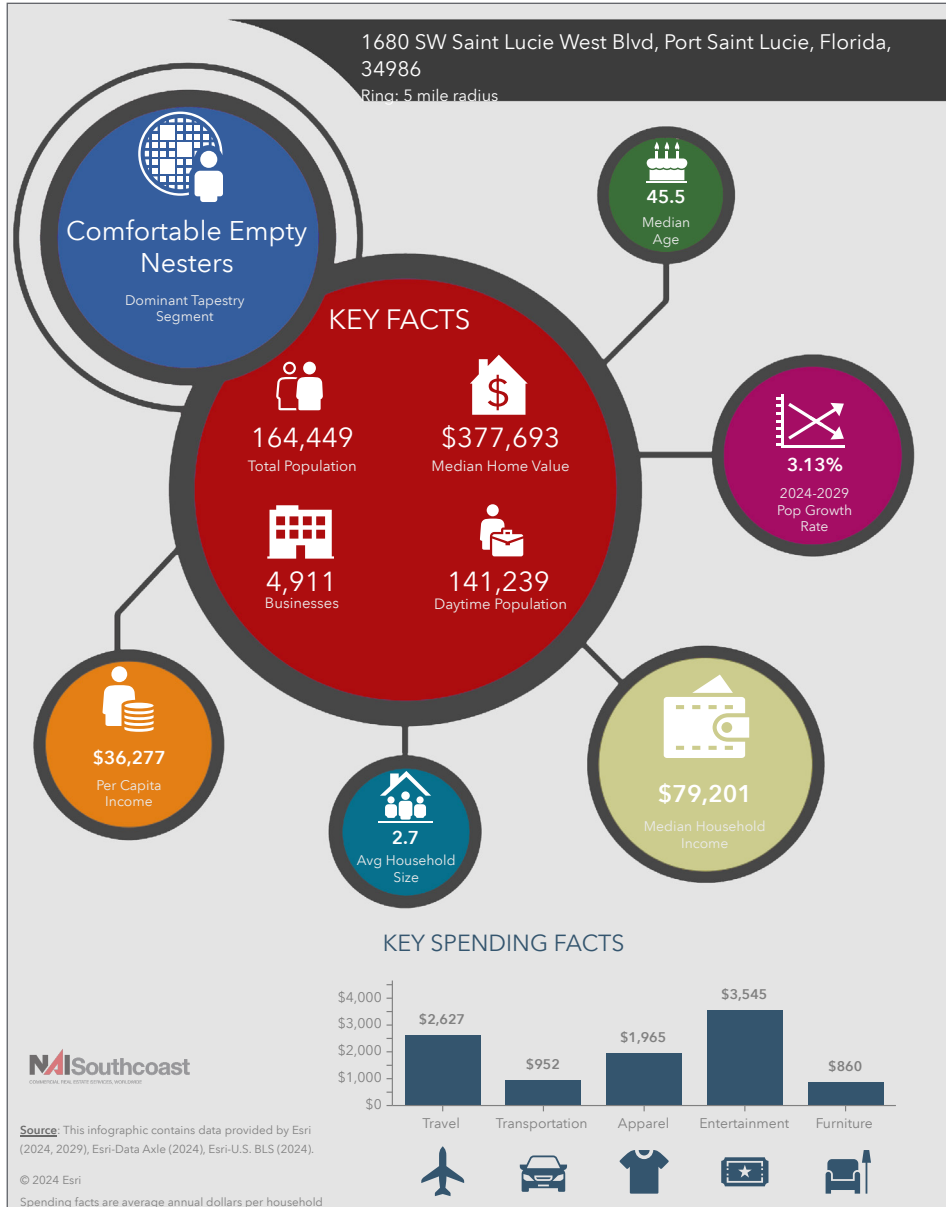
## Drive Time Map



# Clock Tower Place: ±20,428 SF Office/Retail

1680 SW Saint Lucie West Blvd, Port St. Lucie, FL 34986

## 2024 Demographics



### Population

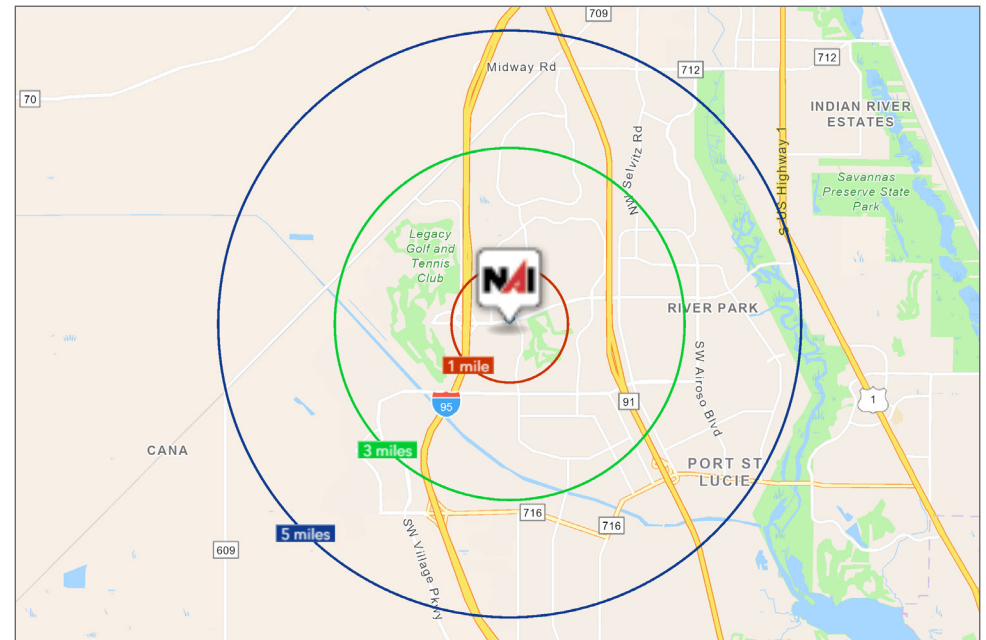
- 1 Mile: 4,949
- 3 Mile: 68,142
- 5 Mile: 164,449

### Average Household Income

- 1 Mile: \$96,537
- 3 Mile: \$102,961
- 5 Mile: \$96,848

### Median Age

- 1 Mile: 61.7
- 3 Mile: 48.6
- 5 Mile: 45.5



## LISTING AGENTS



**Stuart Duffin, P.A, SIOR, CCIM**

Principal | Broker Associate

+1 772 579 0370

[sduffin@naisouthcoast.com](mailto:sduffin@naisouthcoast.com)

[www.naisouthcoast.com](http://www.naisouthcoast.com)



**JJ Sanguily**

Sales Associate

+1 772 834 3519

[jj@naisouthcoast.com](mailto:jj@naisouthcoast.com)

[www.naisouthcoast.com](http://www.naisouthcoast.com)

## Clock Tower Place: ±20,428 SF Office/Retail

1680 SW Saint Lucie West Blvd, Port St. Lucie, FL 34986



FOR LEASE:

# Call for Pricing